



Curriculum Night

Jennifer Bartley - Principal

Sara Valenzuela - Asst Principal

Enchanted Hills ES

2019-2020



Student Handbooks

Every family should receive one handbook.

Please refer to this first with policy questions.



How we will communicate with you?

Monthly newsletters via email and website

Remind App - set up by classroom teacher

Emails regarding upcoming or important events

Phone calls for urgent messages

Weather delays

Phone calls for discipline or safety concerns, positive behaviors



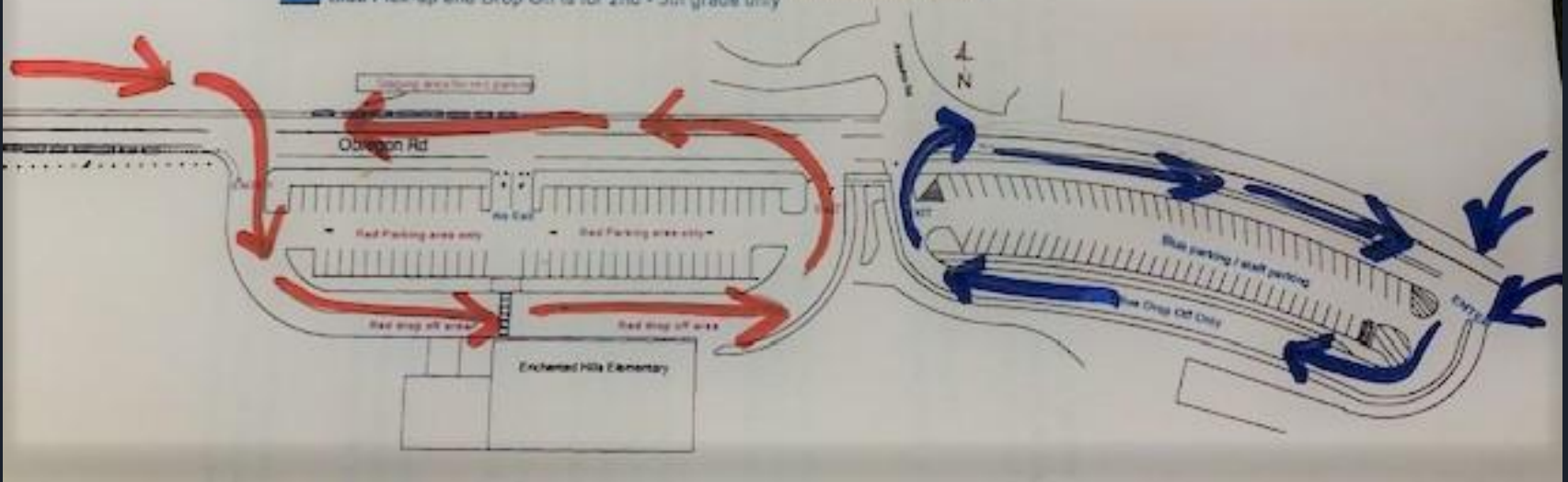
What If I have a concern?

- Start with your child's teacher
- He/She is closest to the situation and can talk to the students and/or other staff members to determine next steps.
- If something arises that requires more support or investigation, the teacher will bring it to administration and security if needed.
- Anything brought to our attention prior to the classroom teacher, except emergencies or serious safety concerns, will be referred back to the classroom teacher.
- Front Office Form

Traffic

When exiting red drop off and pickup parking area, exit to the right only
Red Pick-up and Drop Off is for kindergarten and first only
Siblings of K/1 students may meet in the red drop off and pickup

When exiting blue drop off and pickup parking area, exit to the right only
Blue Pick-up and Drop Off is for 2nd - 5th grade only





Early Drop off

Since staff is not on campus prior to 8:45 am, we cannot have students on campus unsupervised until 8:50 am.

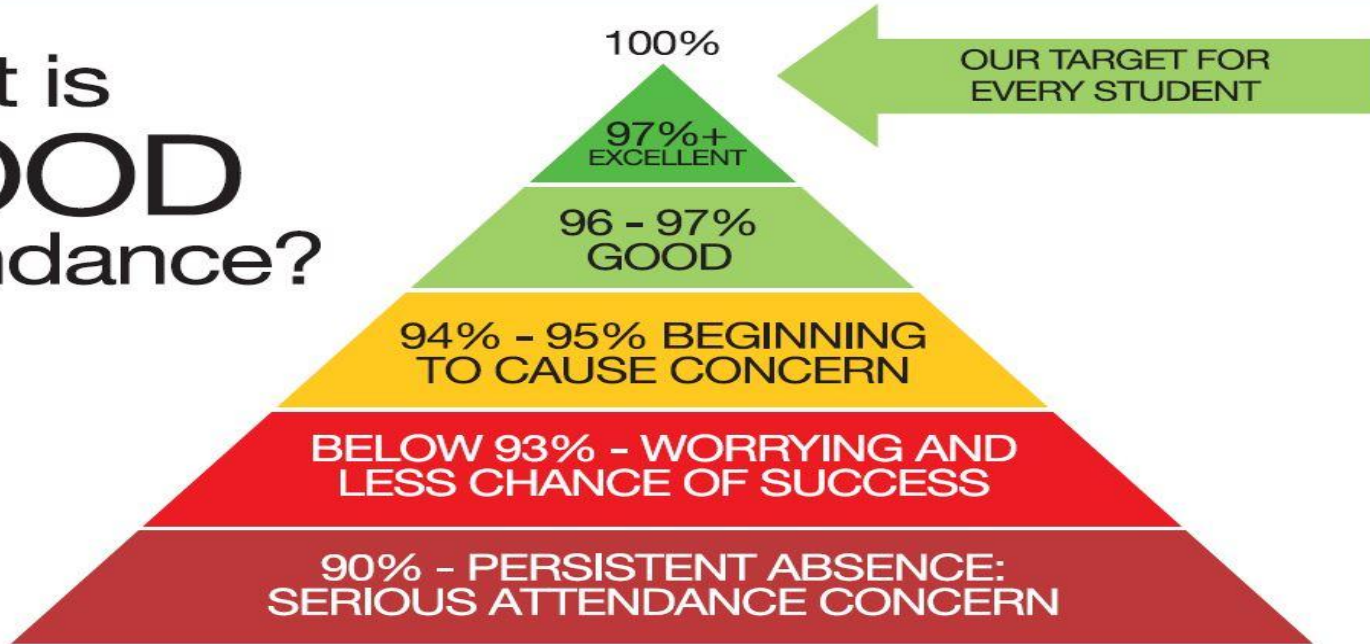


Student Attendance

Please make every effort to have your student(s) present and on time to school.

If students aren't here, they can't learn...and we miss them!

What is
GOOD
attendance?



STUDENT ATTENDANCE MATTERS

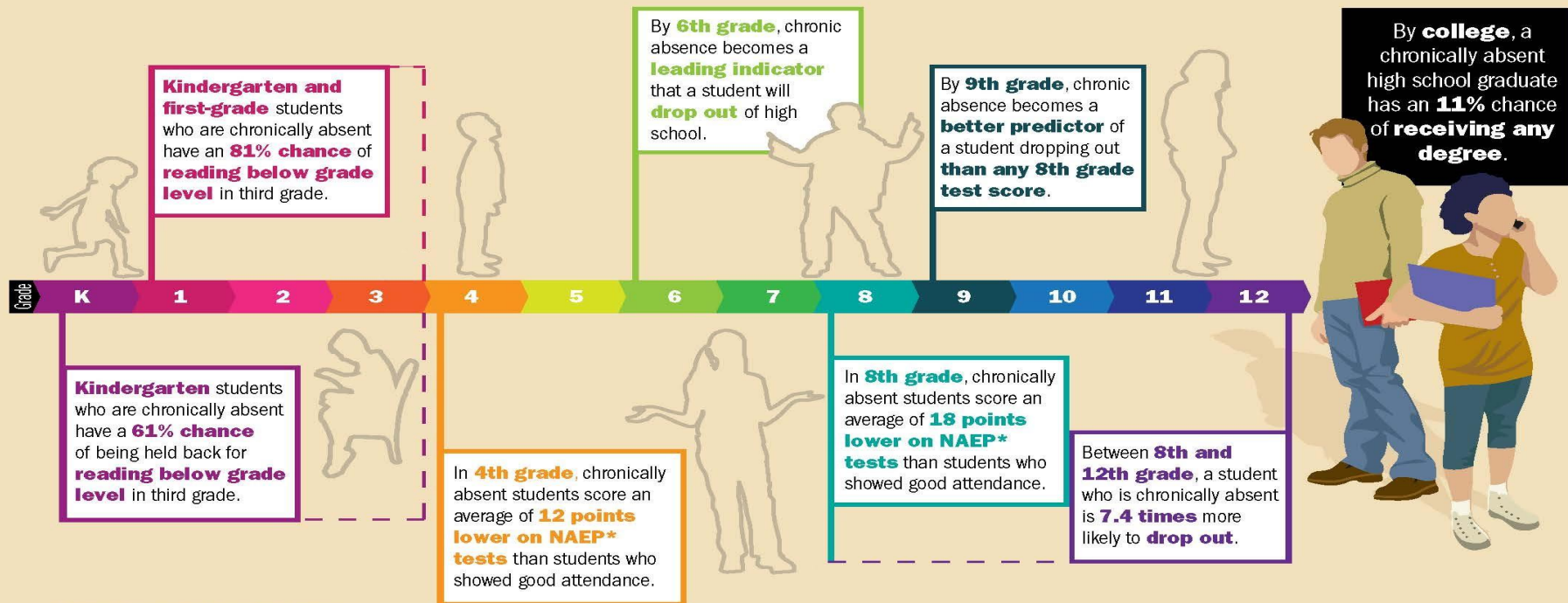
There are an estimated 5–7.5 million students in the United States who are chronically absent from school.

Chronic absenteeism hurts students in a variety of ways as they progress through their school career, starting with kindergarten.

DEFINITIONS:

Chronic Absence – Missing 2 days each month, totaling 18 days, equals 10% of the school year

Good Attendance – Missing 9 days or less in a school year (5%)



*National Assessment of Educational Progress



Good News Updates

School Letter Grade is A while PED configures new grading system.

Last HVAC construction project has been completed in the cafeteria. Still awaiting final inspection approval.



Safety and Security

Limited access to classrooms.

Must have ID when checking out a student.

Volunteer process must be completed to be in classrooms or common areas such as the library.

Please keep emergency contacts/pick-ups up to date.



PTO Needs You!

Volunteering - new process

Snack Sales

Field Trips

Fundraising Events

Night Events